

2-finger parallel grippers



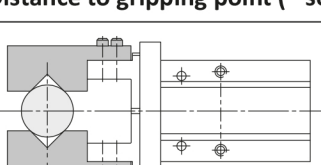
Product notes

- > Gripper with high gripping force
- > Double-acting for inside/outside gripping and short duty cycles
- > Single-acting: normally open (NO), compressed air for closing, opening via return spring
- > Body made of high-strength aluminum alloy, jaws are steel
- > Options
 - Base jaws for customization
 - Sensors for monitoring gripper action via piston position
- > Medium: filtered and oiled/unoled air
- > PNP and NPN sensors:
 - C-slot (straight): GR04.198, GR04.198/NPN
 - C-slot (90° angle): GR04.202P, GR04.202N
 - C-slot (straight, short design): GR04.280P, GR04.280N
 - T-slot (straight): GR04.199, GR04.199/NPN
 - T-slot (straight, short design): GR04.203P, GR04.203N
- > Connector cable for sensors:
 - 20.503: 3-pole M8, cable straight, length 2,500 mm, open wire
 - 20.507: 3-pole M8, cable 90°, length 2,000 mm, open end
 - 20.570: 3-pole M8, length 1,500 mm, end with plug 3-pole M8

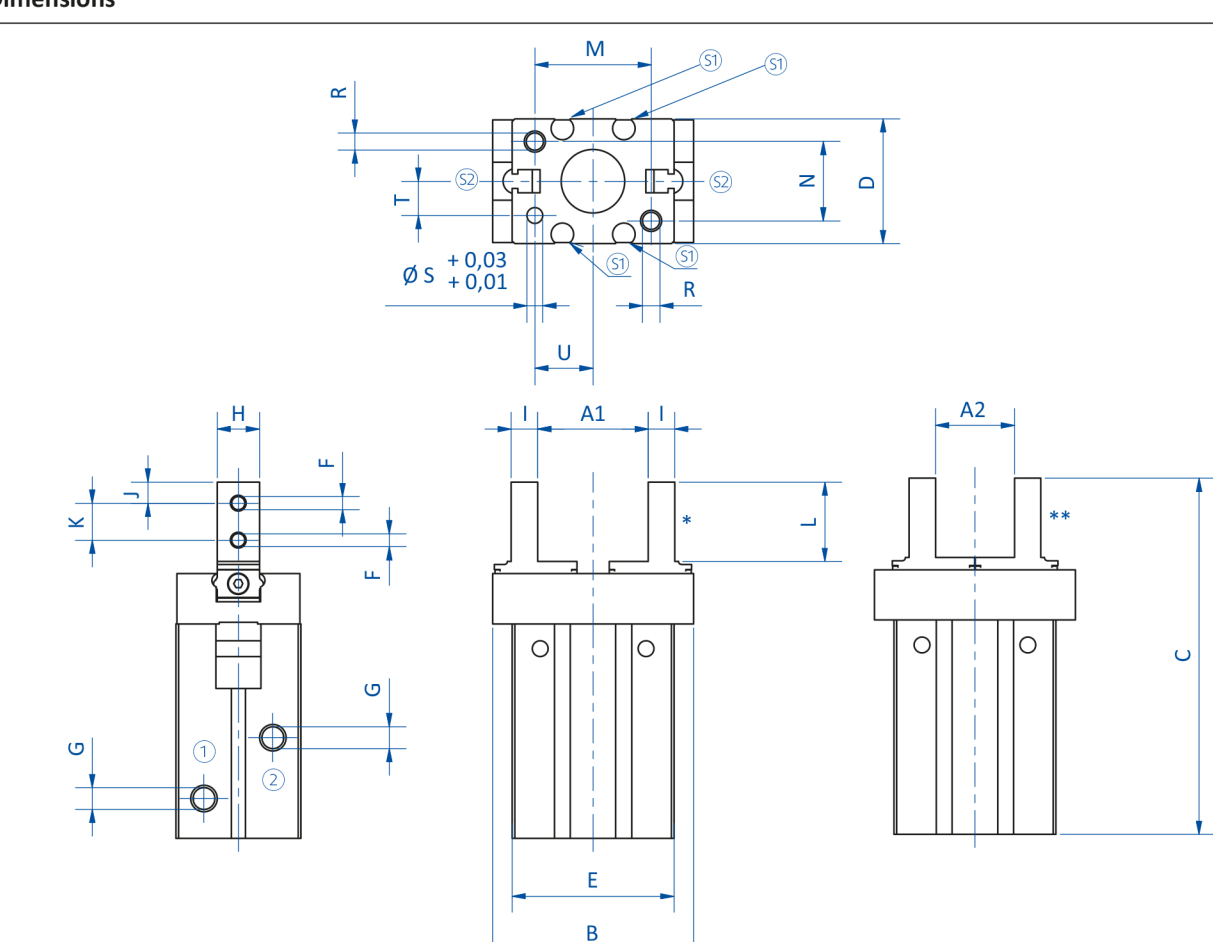
Technical data

Item no.	Principle of operation	Operating pressure [bar (psi)]	Piston diameter [mm]	Stroke per gripper jaw [mm]	Closing force at 6 bar (87 psi) [N]	Opening force at 6 bar (87 psi) [N]	Gripping point distance at 6 bar (87 psi) [mm]	Max. operating frequency [1/min]	Operating temperature [°C (°F)]	Weight [g]	Accessories
GR04.122-10	double-acting	2 - 7 (29 - 101.5)	10	2	15	22	20	100	0 - 60 (32 - 140)	60	Sensor: GR04.199/NPN Sensor: GR04.199 Sensor: GR04.203N Sensor: GR04.203P
GR04.122-10S	single-acting	2 - 7 (29 - 101.5)	10	2	11	--	20	100	0 - 60 (32 - 140)	60	Connecting cable: 20.503 Connecting cable: 20.507 Extension cable: 20.570 Mounting bracket: GR06.050
GR04.122-16	double-acting	1.5 - 7 (21.8 - 101.5)	16	3	40	55	20	100	0 - 60 (32 - 140)	140	Sensor: GR04.198/NPN Sensor: GR04.198 Sensor: GR04.202N Sensor: GR04.202P
GR04.122-16S	single-acting	1.5 - 7 (21.8 - 101.5)	16	3	33	--	20	100	0 - 60 (32 - 140)	140	Sensor: GR04.280N Sensor: GR04.280P Connecting cable: 20.503 Connecting cable: 20.507 Extension cable: 20.570 Mounting bracket: GR06.051
GR04.122-20	double-acting	1.5 - 7 (21.8 - 101.5)	20	5	49	76	40	100	0 - 60 (32 - 140)	270	Sensor: GR04.198/NPN Sensor: GR04.198 Sensor: GR04.202N Sensor: GR04.202P Sensor: GR04.280N
GR04.122-20S	single-acting	1.5 - 7 (21.8 - 101.5)	20	5	40	--	40	100	0 - 60 (32 - 140)	270	Sensor: GR04.280P Connecting cable: 20.503 Connecting cable: 20.507 Extension cable: 20.570 Mounting bracket: GR06.052
GR04.122-25	double-acting	1.5 - 7 (21.8 - 101.5)	25	7	75	118	60	100	0 - 60 (32 - 140)	490	Sensor: GR04.198/NPN Sensor: GR04.198 Sensor: GR04.202N Sensor: GR04.202P Sensor: GR04.280N
GR04.122-25S	single-acting	1.5 - 7 (21.8 - 101.5)	25	7	55	--	60	100	0 - 60 (32 - 140)	490	Sensor: GR04.280P Connecting cable: 20.503 Connecting cable: 20.507 Extension cable: 20.570 Mounting bracket: GR06.053
GR04.122-32	double-acting	1.5 - 7 (21.8 - 101.5)	32	11	179	230	100	60	0 - 60 (32 - 140)	810	Sensor: GR04.198/NPN Sensor: GR04.198 Sensor: GR04.202N Sensor: GR04.202P Sensor: GR04.280N
GR04.122-32S	single-acting	1.5 - 7 (21.8 - 101.5)	32	11	152	--	100	60	0 - 60 (32 - 140)	810	Sensor: GR04.280P Connecting cable: 20.503 Connecting cable: 20.507 Extension cable: 20.570 Mounting bracket: GR06.054
GR04.122-40	double-acting	1.5 - 7 (21.8 - 101.5)	40	15	285	370	125	60	0 - 60 (32 - 140)	1,390	Sensor: GR04.198/NPN Sensor: GR04.198 Sensor: GR04.202N Sensor: GR04.202P Sensor: GR04.280N
GR04.122-40S	single-acting	1.5 - 7 (21.8 - 101.5)	40	15	248	--	125	60	0 - 60 (32 - 140)	1,390	Sensor: GR04.280P Connecting cable: 20.503 Connecting cable: 20.507 Extension cable: 20.570 Mounting bracket: GR06.055

Distance to gripping point (* see diagrams)



Dimensions



Item no.	A1 [mm]	A2 [mm]	B [mm]	C [mm]	D [mm]	E [mm]	F	G	H [mm]	J [mm]	K [mm]	L [mm]	M [mm]	N [mm]	R	Ø S [mm]	T [mm]	U [mm]	
GR04.122-10	15.2	11.2	29	57	16.4	23	M2,5	M3	5	4	3	5.7	12	18	12	M3	2	5.2	7.6
GR04.122-10S	15.2	11.2	29	57	16.4	23	M2,5	M3	5	4	3	5.7	12	18	12	M3	2	5.2	7.6
GR04.122-16	20.9	14.9	38	67.3	23.6	30.6	M3	M5	8	5	4	7	15	22	15	M4	3	6.5	11
GR04.122-16S	20.9	14.9	38	67.3	23.6	30.6	M3	M5	8	5	4	7	15	22	15	M4	3	6.5	11
GR04.122-20	26.3	16.3	50	84.8	27.6	42	M4	M5	10	8	5	9	20	32	18	M5	4	7.5	16.8
GR04.122-20S	26.3	16.3	50	84.8	27.6	42	M4	M5	10	8	5	9	20	32	18	M5	4	7.5	16.8
GR04.122-25	33.3	19.3	63	102.7	33.6	52	M5	M5	12	10	6	12	25	40	22	M6	4	10	21.8
GR04.122-25S	33.3	19.3	63	102.7	33.6	52	M5	M5	12	10	6	12	25	40	22	M6	4	10	21.8
GR04.122-32	48	26	97	113	40	60	M6	M5	15	12	7	14	29	46	26	M6	5	12	23
GR04.122-32S	48	26	97	113	40	60	M6	M5	15	12	7	14	29	46	26	M6	5	12	23
GR04.122-40	60	30	119	139	48	72	M8	M5	18	14	9	17	36	56	32	M8	5	14	29
GR04.122-40S	60	30	119	139	48	72	M8	M5	18	14	9	17	36	56	32	M8	5	14	29

Diagrams

