



Nipper technology | Air nippers – manual and automatic operation

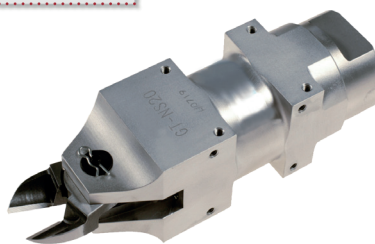
Air nippers – automatic, round/square

Air nippers – automatic, round/square

AIR NIPPERS FOR PLASTIC AND METAL



Air nippers, round



Air nippers, square

Product notes

- > Air nippers for EOAT robot arms or cutting stations
- > Round body can be mounted in any angle position
- > Square body comes with bore holes on five surfaces
- > Rear air connection can be rotated 180°
- > GT-NS20H-1: air nipper with adjustable cutting opening
- > Pressure booster to increase cutting force optionally available

Technical data

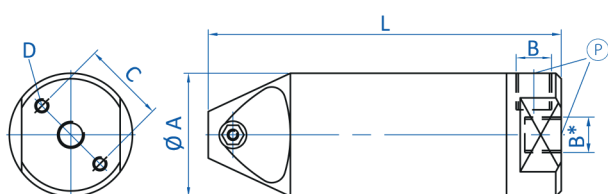
Item no.	Housing	Max. cutting force [N]	Air consumption [cm ³ /stroke]	Operating pressure [bar (psi)]	Height blade [mm]	Connection	Accessories
GT-NR3	Round	294	45	4 - 5 (58 - 72.5)	7	Rc 1/8	--
GT-NR5	Round	392	64	4 - 5 (58 - 72.5)	7	Rc 1/8	--
GT-NR7	Round	490	116	4 - 5 (58 - 72.5)	9	Rc 1/8	--
GT-NR10L	Round	588	116	4 - 6 (58 - 87)	12	Rc 1/8	Mounting bracket: GT-NR10H Mounting bracket: GT-NR10GR Mounting bracket: GT-NR10S Mounting bracket: GT-NR10ST2 Pressure amplifier: P-10L
GT-NR20	Round	1,372	230	5 - 6 (72.5 - 87)	12	Rc 1/8	Mounting bracket: GT-NR20H Mounting bracket: GT-NR20S Mounting bracket: GT-NR20ST2 Pressure amplifier: P-20
GT-NR30	Round	2,744	584	5 - 6 (72.5 - 87)	17	Rc 1/8	Mounting bracket: GT-NR30H Mounting bracket: GT-NR30S Mounting bracket: GT-NR30ST2 Pressure amplifier: P-30
GT-NR50	Round	4,704	1,170	5 - 6 (72.5 - 87)	25.2	Rc 1/4	Mounting bracket: GT-NR50H Mounting bracket: GT-NR50ST2 Pressure amplifier: P-50
GT-NS3	Square	294	45	4 - 5 (58 - 72.5)	7	Rc 1/8	--
GT-NS5	Square	392	64	4 - 5 (58 - 72.5)	7	Rc 1/8	--
GT-NS7	Square	490	116	4 - 5 (58 - 72.5)	9	Rc 1/8	--
GT-NS10L	Square	588	116	4 - 6 (58 - 87)	12	Rc 1/8	Pressure amplifier: P-10L
GT-NS20	Square	1,372	230	5 - 6 (72.5 - 87)	12	Rc 1/8	Pressure amplifier: P-20
GT-NS20H-1	Automatic, square with adjustable cutting opening	1,372	230	5 - 6 (72.5 - 87)	12	Rc 1/8	Pressure amplifier: P-20
GT-NS30	Square	2,744	584	5 - 6 (72.5 - 87)	17	Rc 1/8	Pressure amplifier: P-30



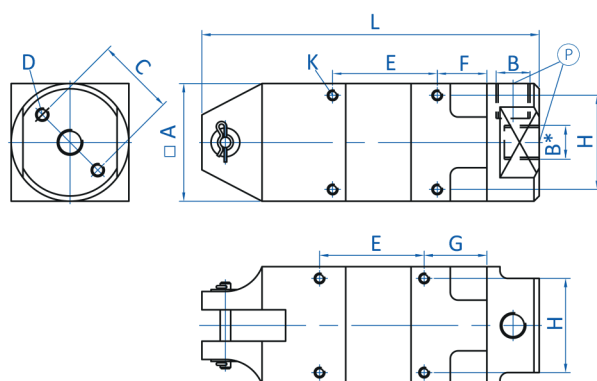
Application example



Dimensions



GT-NR3 | GT-NR5 | GT-NR7 | GT-NR10L |
GT-NR20 | GT-NR30 | GT-NR50



GT-NS3 | GT-NS5 | GT-NS7 | GT-NS10L |
GT-NS20 | GT-NS20H-1 | GT-NS30

Ⓟ = Compressed air connection * = compatible with G threads

Item no.	A [mm]	B	C [mm]	D	E [mm]	F [mm]	G [mm]	H [mm]	K	L [mm]
GT-NR3	23	Rc 1/8	17	M3	--	--	--	--	--	110
GT-NR5	30	Rc 1/8	20	M4	--	--	--	--	--	94
GT-NR7	34	Rc 1/8	22	M4	--	--	--	--	--	113
GT-NR10L	36	Rc 1/8	24	M4	--	--	--	--	--	113
GT-NR20	45	Rc 1/8	30	M5	--	--	--	--	--	129
GT-NR30	56	Rc 1/8	40	M6	--	--	--	--	--	165
GT-NR50	75	Rc 1/4	50	M8	--	--	--	--	--	222
GT-NS3	23	Rc 1/8	17	M3x8	40	19	24	19	M3x3.5	110
GT-NS5	30	Rc 1/8	20	M4x10	30	14	19	24	M3x5	94
GT-NS7	36	Rc 1/8	24	M4x10	30	18	23	28	M4x5.5	113
GT-NS10L	36	Rc 1/8	24	M4x10	30	18	23	28	M4x5.5	113
GT-NS20	45	Rc 1/8	30	M5x12	40	19	24	36	M4x7	129
GT-NS20H-1	45	Rc 1/8	30	M5x12	40	19	24	36	M4x7	129
GT-NS30	56	Rc 1/8	40	M6x12	60	20	30	46	M5x10	170