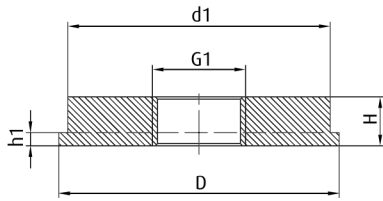


# Fastening elements vacuum cups | Fittings

## Carrier plates

### Carrier plates



Technical data		Dimensions				
Item no.	Thread G1	G1	H [mm]	h1 [mm]	Ø D [mm]	Ø d1 [mm]
<b>270.233</b>	G1/8-female	G1/8	6	3.1	17.5	14.9
<b>270.234</b>	G1/8-female	G1/8	6	3	21	17.5
<b>270.235</b>	G1/8-female	G1/8	5.5	2.1	28.5	25
<b>270.289</b>	G1/8-female	G1/8	10	3	29	20
<b>270.179</b>	G1/4-female	G1/4	20	14.5	43	32
<b>270.262</b>	G1/8-female	G1/8	10	3	44	40
<b>270.284</b>	G1/4-female	G1/4	10	3	44	40
<b>270.338</b>	M12x1.75-female	M12x1.75	10	3	55	45
<b>270.180</b>	G1/4-female	G1/4	20	14	60	50
<b>270.158</b>	G1/8-female	G1/8	11	3	63	59
<b>270.264</b>	G1/4-female	G1/4	11	3	63	59
<b>270.161</b>	G3/8-female	G3/8	11	3	63	59
<b>270.286</b>	G1/2-female	G1/2	11	3	63	59
<b>270.224</b>	G1/4-female	G1/4	11	3	92	88
<b>270.167</b>	G3/8-female	G3/8	11	3	92	88
<b>270.266</b>	G1/2-female	G1/2	11	3	92	88
<b>270.164</b>	G1/8-female	G1/8	11	3	95	88
<b>270.171</b>	G1/4-female	G1/4	15	4	127	120
<b>270.173</b>	G3/8-female	G3/8	15	4	127	120
<b>270.268</b>	G1/2-female	G1/2	15	4	127	120
<b>270.335</b>	G1/2-female	G1/2	20	14	160	150