



Vinyl bellows cups, 1.5 folds – SBV 1




Product description

Durable bellows vacuum cups with 1.5 folds from snug-fitting, wear-resistant material.
Very well suited for handling abrasive products such as cardboard.
Flexible material enables low-leakage gripping of highly flexible products such as foil-packaged goods. Connection via plug-in nipple.


Advantage

- > Bellows compensate differences in height and enable good adaptation to curved or uneven product surfaces
- > Flexible, soft lips
- > Long life cycle
- > Cost-effective replacement of worn seals

Technical data

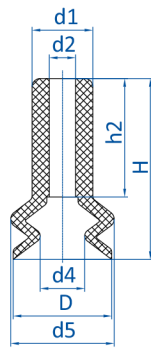
Item no.	Model / Lip dimensions		Number of folds	Material / Colour
23.005.095.V	SBV 1-5	2	1.5	Vinyl (bl)
23.007.112.V	SBV 1-7	2	1.5	Vinyl (bl)
23.013.097.V	SBV 1-13	5	1.5	Vinyl (bl)
23.015.098.V	SBV 1-15	5	1.5	Vinyl (bl)
23.019.109.V	SBV 1-19	8	1.5	Vinyl (bl)
23.020.114.V	SBV 1-20	6	1.5	Vinyl (bl)
23.022.028.V	SBV 1-22	8	1.5	Vinyl (bl)
23.028.113.V	SBV 1-28	9	1.5	Vinyl (bl)
23.030.107.V	SBV 1-30	10.5	1.5	Vinyl (bl)
23.031.192.V	SBV 1-31	6	1.5	Vinyl (bl)
23.035.111.V	SBV 1-35	12	1.5	Vinyl (bl)
23.052.116.V	SBV 1-52	6	1.5	Vinyl (bl)
23.070.060.V	SBV 1-70	20	1.5	Vinyl (bl)

Accessories

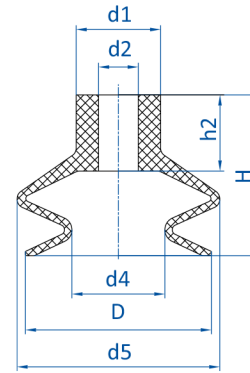
Item no.	 Suitable fittings					
	M5-male	M6-male	G1/8-male	G1/8-female	G1/4-male	G1/4-female
23.005.095.V	270.195	--	--	--	--	--
23.007.112.V	270.001	--	--	--	--	--
23.013.097.V	270.013	270.103	270.003	270.015	--	--
23.015.098.V	270.134	270.104	270.033	270.478	--	--
23.019.109.V	--	--	270.030	270.019	270.274	270.275
23.020.114.V	270.134	270.104	270.033	270.478	--	--
23.022.028.V	270.013	270.103	270.003	270.015	270.194	--
23.028.113.V	270.134	270.104	270.033	270.478	--	--
23.030.107.V	--	270.312/19	270.030	270.019	270.274	270.275
23.031.192.V	--	270.312/19	270.030	270.019	270.274	270.275
23.035.111.V	270.443	--	270.238	270.110	270.534	--
23.052.116.V	--	--	270.132	--	270.208	270.452
23.070.060.V	--	--	--	--	270.184	--



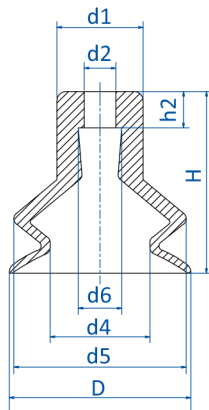
Dimensions



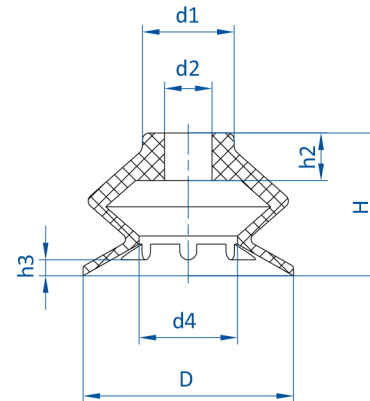
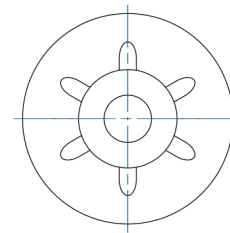
Drawing A



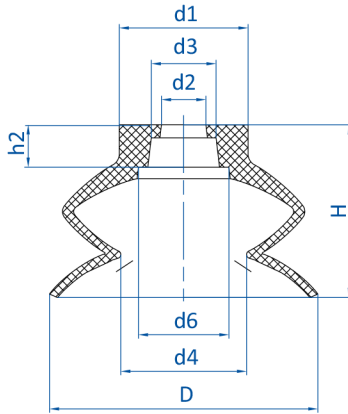
Drawing B



Drawing C



Drawing D



Drawing E

Item no.	Drawing	Ø D [mm]	Ø d1 [mm]	Ø d2 [mm]	Ø d3 [mm]	Ø d4 [mm]	Ø d5 [mm]	Ø d6 [mm]	H [mm]	h2 [mm]	h3 [mm]
23.005.095.V	A	4.5	3	1.5	--	2.5	4	--	13	10	--
23.007.112.V	A	6	3.7	1.6	--	2.5	6.5	--	11	7.5	--
23.013.097.V	B	13	7.7	3.7	--	7.5	12.5	--	14.7	6.7	--
23.015.098.V	B	15.5	9	3.4	--	8.5	17	--	20.7	11.7	--
23.019.109.V	B	19	12.8	7	--	12	19	--	18	7.4	--
23.020.114.V	C	20	9.5	3.5	--	11	19	4.8	20	4	--
23.022.028.V	A	22	10	4.7	--	11	24	--	19	9	--
23.028.113.V	C	28	12.5	3.5	--	13	26	5	21	4	--
23.030.107.V	B	30	13.2	6.4	--	15	29.3	--	22	7	--
23.031.192.V	D	31	13.5	7	--	14.5	--	--	21	7	2.4
23.035.111.V	B	35	17	6	--	20	33	--	30	16	--
23.052.116.V	B	50.8	18.5	9.7	--	30	50	--	40.8	21.2	--
23.070.060.V	E	70	33.6	11.6	16.9	33	--	24.3	45	11.1	--