



Nipper technology

Blades for plastic, stationary, Z-shape

Blades for plastic, stationary, Z-shape



Product notes

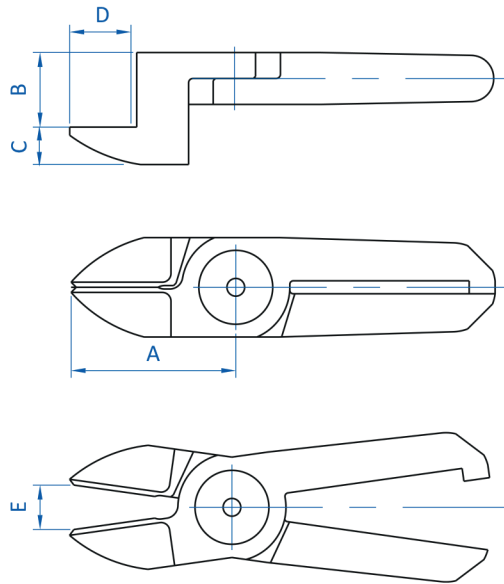
- > Blades with offset cutting edge for overcoming obstacles or for narrow sprues
- > AH: standard blade
- > RAH: reverse cutting edge if cutting flush to workpiece with blade "AH" is not possible

Technical data

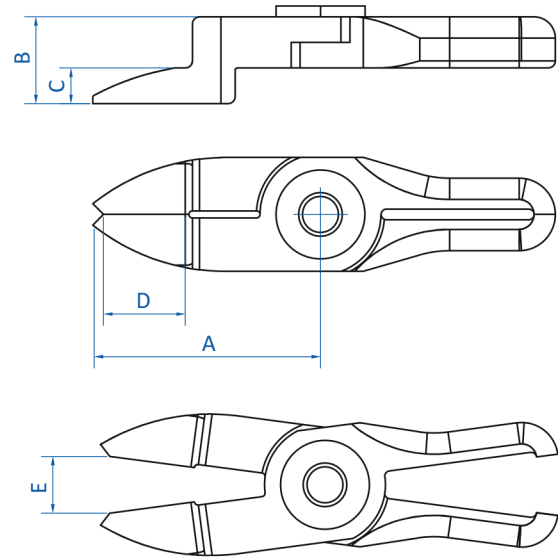
Item no.	Material	Max. cutting thickness [mm]		Design	Weight [g]	Air nippers
		PP/PE	ABS			
NY05AH	Ferrous alloy	3	2	Standard blade	37	GT-NF05 GT-NY05-4 GT-NY05
NY05RAH	Ferrous alloy	3	2	reverse cutting edge	31	GT-NF05 GT-NY05R-4 GT-NY05R
NY10AH	Ferrous alloy	3.5	2.3	Standard blade	43	GT-NF10 GT-NY10-4 GT-NY10
NY10RAH	Ferrous alloy	3.5	2.3	reverse cutting edge	40	GT-NF10 GT-NY10R GT-NY10R-4
NY15AH	Ferrous alloy	4	2.6	Standard blade	76	GT-NF15 GT-NY15-4 GT-NY15
NY15RAH	Ferrous alloy	4	2.6	reverse cutting edge	52	GT-NF15 GT-NY15R-4 GT-NY15R
NY25AH	Ferrous alloy	5	3.4	Standard blade	110	GT-NY25 GT-NY25-6
NY25RAH	Ferrous alloy	5	3.4	reverse cutting edge	89	GT-NY25 GT-NY25R GT-NY25R-6



Dimensions



NY05AH | NY10AH | NY15AH | NY25AH



NY05RAH | NY10RAH | NY15RAH | NY25RAH

Item no.	A [mm]	B [mm]	C [mm]	D [mm]	E [mm]
NY05AH	31	14	5	13	5.5
NY05RAH	30	7	5	12	5
NY10AH	33	15	5	15	8
NY10RAH	32	7	5	15	7
NY15AH	38	16	5.5	16	11
NY15RAH	35	7.7	5.5	15	9
NY25AH	46	18	6	19	13
NY25RAH	42	16	5	18	12