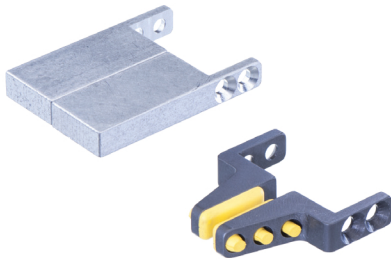




Interchangeable jaws for gripper GR04.130U



GR04.130C-1 and GR04.130C-4

* = Closing force depends on geometry of gripper jaws

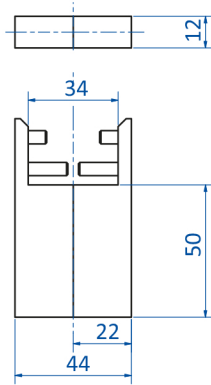
Product notes

> Interchangeable jaws for gripper GR04.130U

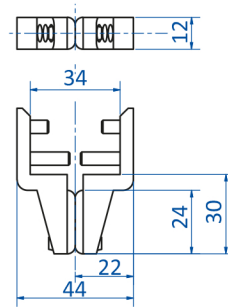
Technical data

Item no.	Jaw design	Application benefit	Weight [g]	Replacement parts
GR04.130C-1	Blank jaws	Aluminum-blanks: For customized jaw design	87	--
GR04.130C-4	Jaws with HNBR pads	2 x jaws with HNBR pads – gentle gripping of sensitive components. Temperature range 0 - 160 °C (0 - 320 °F) for short term contact – up to 30 seconds	35	GR04.130C-4 HNBR (p.200)

Dimensions



GR04.130C-1



GR04.130C-4