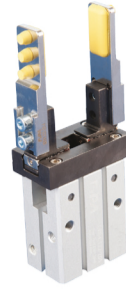
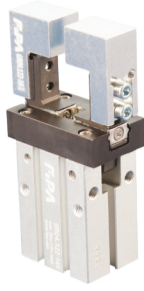




Grippers | Parallel grippers

Base jaws for parallel grippers

Base jaws for parallel grippers



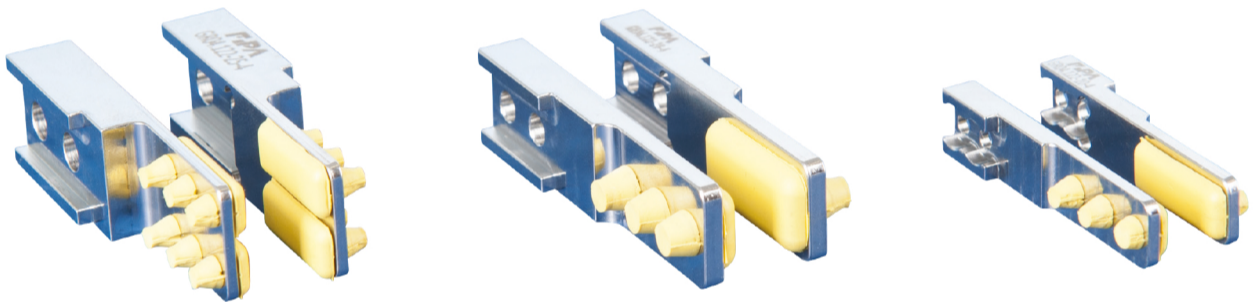
Product notes

- > Base jaws aluminum (index -1) for customization
- > Base jaws steel (index -4) with HNBR pads enable soft gripping
- > Base jaws with index -4 come with HNBR pads
- > Screws included in scope of delivery

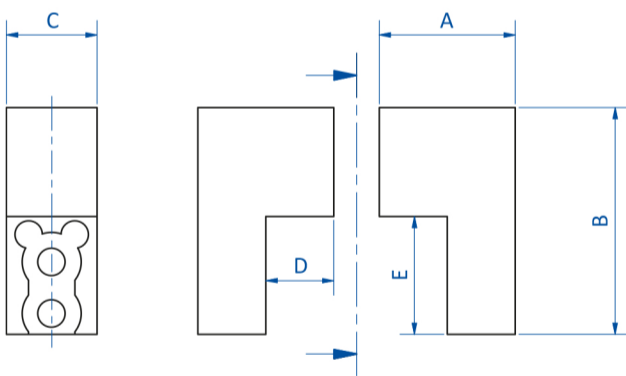
Technical data

Item no.	Suitable for parallel grippers	Weight [g]	Replacement parts
GR04.122-10-1	GR04.122-10, GR04.122-10S	20	--
GR04.122-16-1	GR04.122-16, GR04.122-16S	24	--
GR04.122-20-1	GR04.122-20, GR04.122-20S	37	--
GR04.122-25-1	GR04.122-25, GR04.122-25S	53	--
GR04.122-32-1	GR04.122-32, GR04.122-32S	106	--
GR04.122-40-1	GR04.122-40, GR04.122-40S	156	--
GR04.122-10-4	GR04.122-10, GR04.122-10S	29	GR04.103-4HNBR
GR04.122-16-4	GR04.122-16, GR04.122-16S	49	GR04.103-4HNBR
GR04.122-20-4	GR04.122-20, GR04.122-20S	61	GR04.130C-4HNBR
GR04.122-25-4	GR04.122-25, GR04.122-25S	85	GR04.103-4HNBR
GR04.122-32-4	GR04.122-32, GR04.122-32S	136	GR04.103-4HNBR
GR04.122-40-4	GR04.122-40, GR04.122-40S	230	GR04.130C-4HNBR

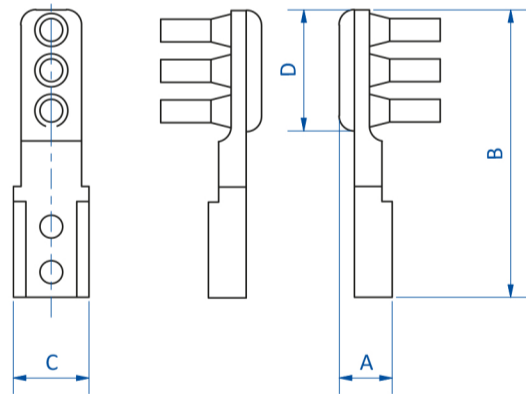
Base jaws with HNBR pads



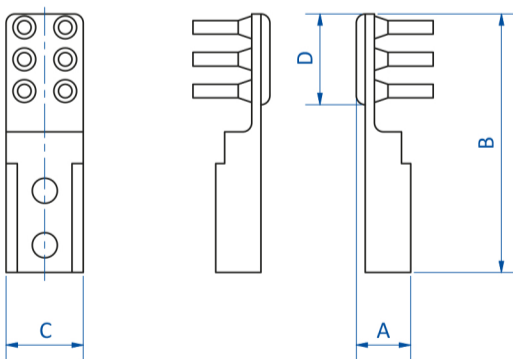
Dimensions



GR04.122-10-1 | GR04.122-16-1 | GR04.122-20-1 |
GR04.122-25-1 | GR04.122-32-1 | GR04.122-40-1



GR04.122-10-4 | GR04.122-16-4 | GR04.122-20-4



GR04.122-25-4 | GR04.122-32-4 | GR04.122-40-4

Item no.	A [mm]	B [mm]	C [mm]	D [mm]	E [mm]
GR04.122-10-1	15	25	10	7.5	13
GR04.122-16-1	17.9	28	13	10.4	16
GR04.122-20-1	21.5	33	15	14	21
GR04.122-25-1	25	38	17	17.5	26
GR04.122-32-1	36.4	42	20	22.9	30
GR04.122-40-1	40.4	49	23	26.9	37
GR04.122-10-4	7.5	45.2	10	20	--
GR04.122-16-4	9.5	57	13	20	--
GR04.122-20-4	10.5	57	15	24	--
GR04.122-25-4	12	57	17	20	--
GR04.122-32-4	15.2	57	20	20	--
GR04.122-40-4	17.3	64	24	24	--