



Vacuum cups accessories

Move-in guard for vacuum cups SV-BG

Move-in guard for vacuum cups SV-BG



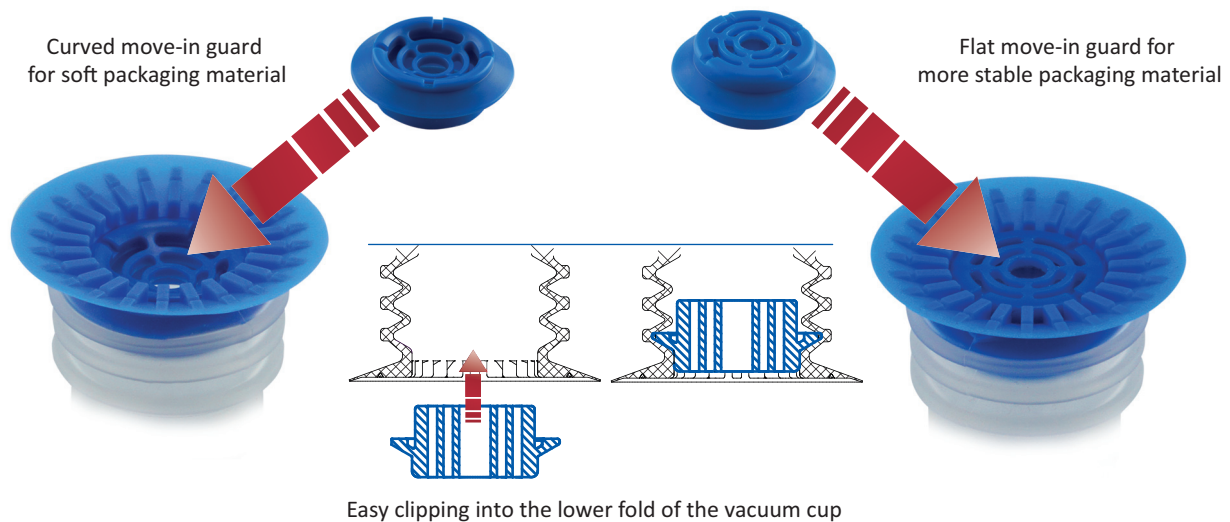
Product notes

- > Two variants of differently shaped support grids prevent flexible film packaging from being sucked in
- > Curved design suitable for soft packaging material
- > Flat version is used for more stable packaging material
- > Easy clipping into the lower fold of the SV-BG series vacuum cup
- > SV-BG series vacuum cups must always be used in conjunction with a move-in guard

Technical data

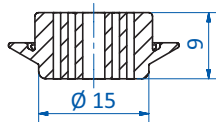
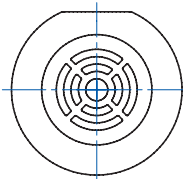
Item no.	Design	Suitable for	Material
78.525-f	flat	SV-BG-30	PP
78.525-s	curved	SV-BG-30	PP
78.526-f	flat	SV-BG-40	PP
78.526-s	curved	SV-BG-40	PP
78.527-f	flat	SV-BG-50	PP
78.527-s	curved	SV-BG-50	PP

Two variants of differently shaped support grids clipped into the lower fold

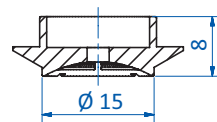
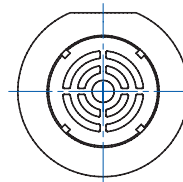




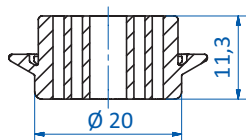
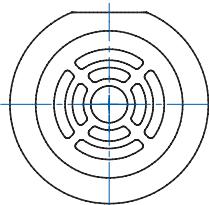
Dimensions



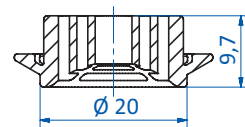
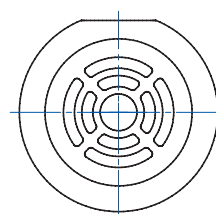
78.525-f



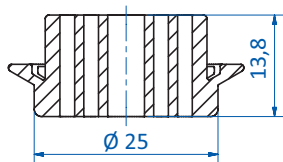
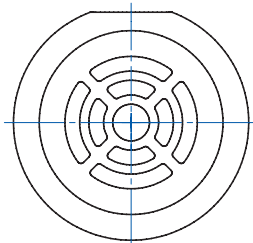
78.525-s



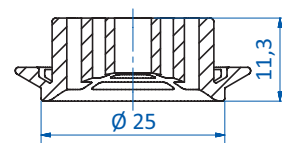
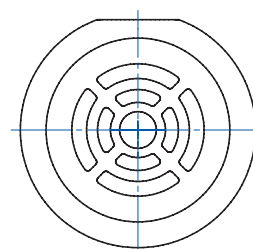
78.526-f



78.526-s



78.527-f



78.527-s