



Series | Bellows vacuum cups SB

Bellows vacuum cups, universal, 1.5 folds – SKT-B1

Bellows vacuum cups, universal, 1.5 folds – SKT-B1




Product notes

Universal bellows vacuum cup with 1.5 folds for handling delicate or uneven products.
Connection by means of plug nipple.


Advantage

- > Bellows compensate for differences in height and enable a gentle touchdown on sensitive product surfaces
- > Soft sealing lip adapts to uneven surfaces
- > Cost-effective replacement of worn seals

Technical data

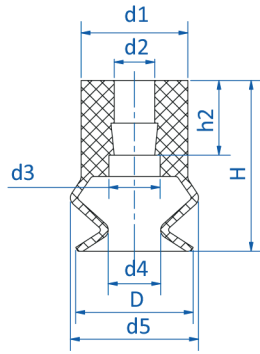
Item no.	Model		Number of folds	Material / Color
23.005.286.*	SKT-B1-5	2	1.5	NBR (sw)
23.011.234.*	SKT-B1-11	5.5	1.5	NBR (sw), SI (tr)
23.014.235.*	SKT-B1-14	5	1.5	NBR (sw), SI (tr)
23.016.236.*	SKT-B1-16	8.5	1.5	NBR (sw), SI (tr)
23.018.237.*	SKT-B1-18	5	1.5	NBR (sw), SI (tr)
23.020.238.*	SKT-B1-20	5	1.5	NBR (sw), SI (tr)
23.022.239.*	SKT-B1-22	8	1.5	NBR (sw), SI (tr)
23.025.240.*	SKT-B1-25	12	1.5	NBR (sw), SI (tr)
23.033.241.*	SKT-B1-33	11	1.5	NBR (sw), SI (tr)
23.043.242.*	SKT-B1-43	12.5	1.5	NBR (sw), SI (tr)
23.053.243.*	SKT-B1-53	15	1.5	NBR (sw), SI (tr)
23.063.244.*	SKT-B1-63	15	1.5	NBR (sw), SI (tr)

Accessories

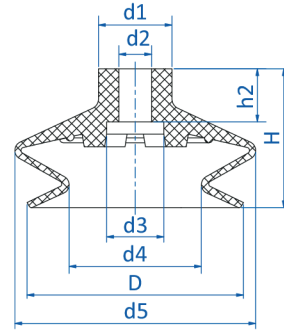
Item no.	 Suitable fittings						
	M5-male	M5-female	M6-male	G1/8-male	G1/8-female	G1/4-male	G1/4-female
23.005.286.*	270.772	--	--	--	--	--	--
23.011.234.*	270.772	270.347	270.104	270.033	270.478	--	--
23.014.235.*	270.772	270.347	270.104	270.033	270.478	--	--
23.016.236.*	270.772	270.347	270.104	270.033	270.478	--	--
23.018.237.*	270.772	270.347	270.104	270.033	270.478	--	--
23.020.238.*	270.772	270.347	270.104	270.033	270.478	--	--
23.022.239.*	270.772	270.347	270.104	270.033	270.478	--	--
23.025.240.*	270.772	270.347	270.104	270.033	270.478	--	--
23.033.241.*	--	--	270.315	270.196	270.114	270.190	270.192
23.043.242.*	--	--	270.315	270.196	270.114	270.190	270.192
23.053.243.*	--	--	270.315	270.196	270.114	270.190	270.192
23.063.244.*	--	--	270.315	270.196	270.114	270.190	270.192



Dimensions



Drawing A



Drawing B

Item no.	Drawing	∅ D [mm]	∅ d1 [mm]	∅ d2 [mm]	∅ d3 [mm]	∅ d4 [mm]	∅ d5 [mm]	H [mm]	h2 [mm]
23.005.286._*	A	5.5	7	3.8	--	2.5	6	11	7
23.011.234._*	A	11	10	3.8	4.8	4.9	12	16	7
23.014.235._*	A	14	10	3.8	4.8	4.8	14	16	7
23.016.236._*	A	16	10	3.8	4.8	8.2	17.5	19	7
23.018.237._*	A	18	10	3.8	4.8	7.8	18	16.5	7
23.020.238._*	A	19	10	3.8	4.8	10.6	20	16	7
23.022.239._*	A	22	10	3.8	4.8	11.4	24	19	7
23.025.240._*	A	24	10	3.8	4.8	9.2	25	23	7
23.033.241._*	B	33	18	8	16	17	36	27.5	13
23.043.242._*	B	43	18	8	14	22.5	46	28	13
23.053.243._*	B	53	18	8	14	32.4	59	34	13
23.063.244._*	B	63	18	8	14	42.5	67	34	13