



Series | Flat vacuum cups SF

Universal flat vacuum cups – SKT-F

Universal flat vacuum cups – SKT-F



Product notes

Universal flat suction cup with single sealing lip for handling flat workpieces with smooth to slightly rough surfaces.

Advantage

- > High stability enables high acceleration
- > Fast cycle times possible due to low inherent volume

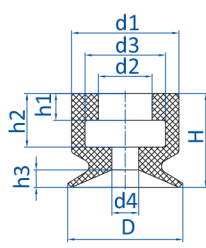
Technical data

Item no.	Model	↓	Material / Color
102.005.496.*	SKT-F-5	1	NBR (sw)
102.008.497.*	SKT-F-8	1.4	NBR (sw), SI (tr)
102.010.498.*	SKT-F-10	1.5	NBR (sw)
102.015.499.*	SKT-F-15	2	NBR (sw), SI (tr)
102.020.500.*	SKT-F-20	2.5	NBR (sw), SI (tr)
102.025.501.*	SKT-F-25	3	NBR (sw), SI (tr)
102.030.502.*	SKT-F-30	2	NBR (sw), SI (tr)
102.040.503.*	SKT-F-40	4	NBR (sw), SI (tr)
102.050.504.*	SKT-F-50	4	NBR (sw), SI (tr)

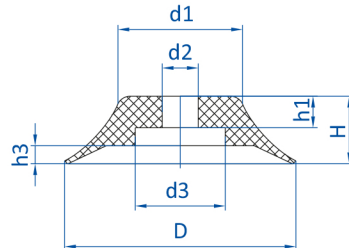
Accessories

Item no.	Suitable fittings							Suitable spring leveler (Snap-in)	
	M5-male	M5-female	M6-male	G1/8-male	G1/8-female	G1/4-male	G1/4-female	Spring leveler	↓
102.005.496.*	270.010	270.005	--	270.009	270.007	--	--	50.330	9
102.008.497.*	270.010	270.005	--	270.009	270.007	--	--	50.330	9
102.010.498.*	270.010	270.005	--	270.009	270.007	--	--	50.330	9
102.015.499.*	270.200	--	--	270.064	270.065	--	--	50.330	9
102.020.500.*	270.311	--	--	270.063	270.061	--	--	--	--
102.025.501.*	--	--	270.312/19	270.030	270.019	270.274	270.275	--	--
102.030.502.*	--	--	270.312/19	270.030	270.019	270.274	270.275	--	--
102.040.503.*	--	--	270.312/19	270.030	270.019	270.274	270.275	--	--
102.050.504.*	--	--	--	270.012	270.020	270.491	270.492	--	--

Dimensions



Drawing A



Drawing B

Item no.	Drawing	∅ D [mm]	∅ d1 [mm]	∅ d2 [mm]	∅ d3 [mm]	∅ d4 [mm]	G1	H [mm]	h1 [mm]	h2 [mm]	h3 [mm]
102.005.496.*	A	5.5	7.5	4.2	6.5	1.5	--	6.5	2	4	1
102.008.497.*	A	9.5	9	4.2	6.5	2.4	--	7	2	4	1.4
102.010.498.*	A	10.5	8.5	4.2	6.5	2	--	7.5	2	4	1.5
102.015.499.*	B	16	12	5	8	--	--	8	2.5	--	2
102.020.500.*	B	21	15	5	11	--	--	10	4.5	--	2.5
102.025.501.*	B	25.5	16	6	11	--	--	14	7	--	3
102.030.502.*	B	30	14	6	11	--	--	12	7	--	2
102.040.503.*	B	41	24	6	11	--	--	14	7	--	4
102.050.504.*	B	51	27.5	8	20	--	--	15	7	--	4

* Material code: NBR = 1, SI = 2