

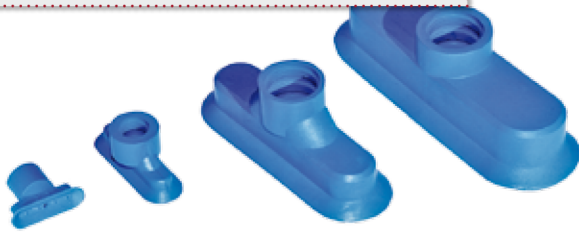


Series | Oval vacuum cups SO

High temperature Thermalon® oval cups – SKT-O

High temperature Thermalon® oval cups – SKT-O

UP TO 160 °C (320 °F) & MINIMUM MARKING



Product description

Oval vacuum cups for smooth surfaces suitable for removing hot plastic parts to be painted from an injection molding machine. Thermalon® is a material mixture specially optimized for the plastics industry with a hardness of 60° Shore A. Connection via plug-in nipple.


Advantage

- > Extremely low-marking
- > Free of silicone and other paint-wetting-impairment substances (PWIS)
- > Significantly increased suction force compared to round vacuum cups of the same width
- > Soft sealing lip also allows adhesion to curved products

Ordering notes:

From size 24x8 mm upward, a gripper clamp (available separately) is recommended to prevent inadvertent rotation.


Technical data

| Item no. | Model / Lip dimensions |  | Material / Colour | Usage temperature [°C (°F)] |
|------------------|------------------------|---|-------------------|-----------------------------|
| 132.4x2.079.19 | SKT-O-4x2 | 0.4 | Thermalon® (bl) | 0 - 160 (32 - 320) |
| 132.7x4.080.19 | SKT-O-7x4 | 0.5 | Thermalon® (bl) | 0 - 160 (32 - 320) |
| 132.15x5.081.19 | SKT-O-15x5 | 0.6 | Thermalon® (bl) | 0 - 160 (32 - 320) |
| 132.18x6.082.19 | SKT-O-18x6 | 1 | Thermalon® (bl) | 0 - 160 (32 - 320) |
| 132.24x8.083.19 | SKT-O-24x8 | 1 | Thermalon® (bl) | 0 - 160 (32 - 320) |
| 132.30x10.084.19 | SKT-O-30x10 | 1 | Thermalon® (bl) | 0 - 160 (32 - 320) |
| 132.45x15.085.19 | SKT-O-45x15 | 2 | Thermalon® (bl) | 0 - 160 (32 - 320) |
| 132.60x20.086.19 | SKT-O-60x20 | 2.5 | Thermalon® (bl) | 0 - 160 (32 - 320) |

Accessories

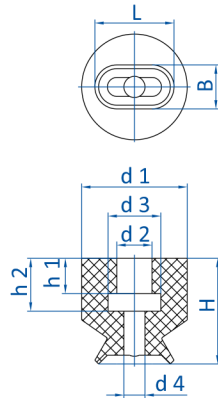
Clamp:

Accessories

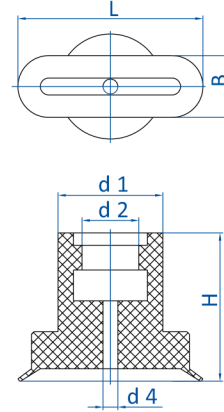
| Item no. |  Suitable fittings | | | | | | |
|------------------|---|---------|---------|-----------|-------------|-----------|-------------|
| | M3-male | M4-male | M5-male | G1/8-male | G1/8-female | G1/4-male | G1/4-female |
| 132.4x2.079.19 | 270.014 | 270.111 | 270.300 | -- | -- | -- | -- |
| 132.7x4.080.19 | 270.014 | 270.111 | 270.300 | -- | -- | -- | -- |
| 132.15x5.081.19 | -- | -- | 270.094 | 270.095 | 270.096 | -- | -- |
| 132.18x6.082.19 | -- | -- | 270.094 | 270.095 | 270.096 | -- | -- |
| 132.24x8.083.19 | -- | -- | 270.094 | 270.095 | 270.096 | -- | -- |
| 132.30x10.084.19 | -- | -- | 270.094 | 270.095 | 270.096 | -- | -- |
| 132.45x15.085.19 | -- | -- | -- | -- | -- | 270.097 | 270.098 |
| 132.60x20.086.19 | -- | -- | -- | -- | -- | 270.097 | 270.098 |



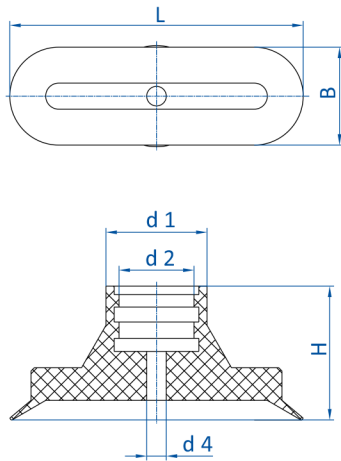
Dimensions



Drawing A



Drawing B



Drawing C

| Item no. | Drawing | L [mm] | B [mm] | Ø d1 [mm] | Ø d2 [mm] | Ø d3 [mm] | Ø d4 [mm] | H [mm] |
|------------------|---------|--------|--------|-----------|-----------|-----------|-----------|--------|
| 132.4x2.079.19 | A | 4.5 | 2.5 | 6 | 2 | 3 | 1.2 | 6 |
| 132.7x4.080.19 | A | 7 | 3.5 | 6 | 2 | 3 | 1.4 | 6 |
| 132.15x5.081.19 | B | 15 | 5 | 8.5 | 4.6 | -- | 1.2 | 12 |
| 132.18x6.082.19 | B | 18 | 6 | 8.5 | 4.6 | -- | 1.5 | 12 |
| 132.24x8.083.19 | B | 24 | 8 | 11.5 | 5.5 | -- | 1.5 | 12 |
| 132.30x10.084.19 | B | 30 | 10 | 11.5 | 5.5 | -- | 2.5 | 12 |
| 132.45x15.085.19 | C | 45 | 15 | 15.5 | 11.5 | -- | 3 | 21 |
| 132.60x20.086.19 | C | 60 | 20 | 15.5 | 11.5 | -- | 4 | 21 |