



Nipper technology | Air nippers – manual and automatic operation

Blades for plastic, angled

Blades for plastic, angled



Model PF

Product notes

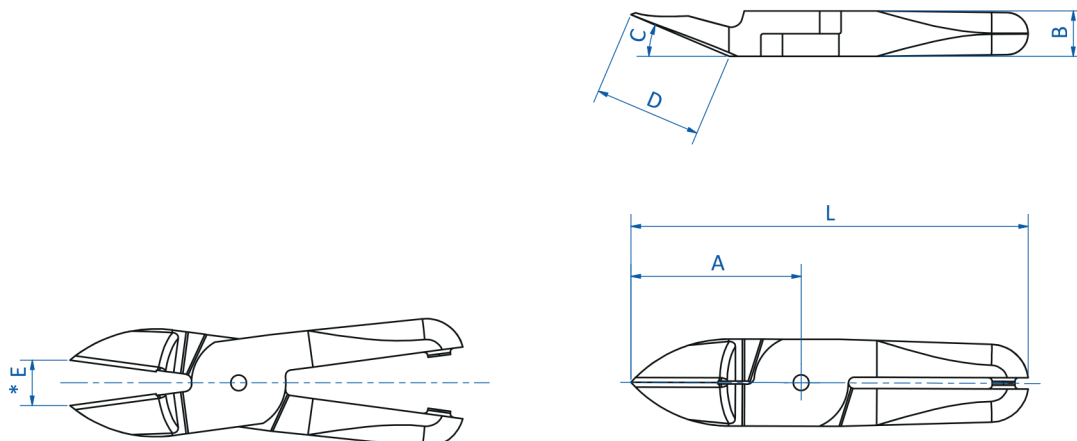
- > Blades with angled cutting edge
- > Model PF: blades with deep angle
- > All other blades with standard angle

Technical data

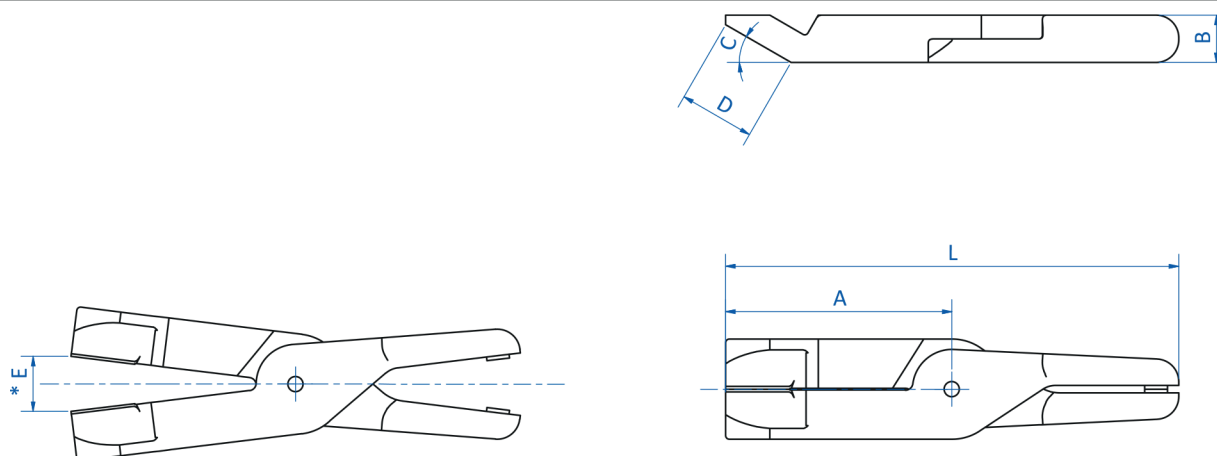
Item no.	Material	Max. cutting thickness [mm]		Weight [g]	Air nippers
		PP/PE	ABS		
N3AP	Ferrous alloy	2	--	35	GT-N3 (p.288), GT-NR3 (p.286), GT-NS3 (p.286)
N5AP	Ferrous alloy	2	--	40	GT-N5 (p.288), GT-NR5 (p.286), GT-NS5 (p.286)
N7AP	Ferrous alloy	3	2	80	GT-N7 (p.288), GT-NR7 (p.286), GT-NS7 (p.286)
N7PF	Ferrous alloy	3	2	80	GT-N7 (p.288), GT-NR7 (p.286), GT-NS7 (p.286)
N10AP	Ferrous alloy	4	2.6	85	GT-N10 (p.288)
N10LAB152	Ferrous alloy	4	2.6	165	GT-NR10L (p.286)
N10LAP	Ferrous alloy	4	2.6	120	GT-NR10L (p.286), GT-NS10L (p.286)
N10LPF	Ferrous alloy	4	2.6	120	GT-NR10L (p.286), GT-NS10L (p.286)
N12AP	Ferrous alloy	4.5	4	135	GT-N12 (p.288)
N20AA239	Ferrous alloy	6	4	195	GT-N20 (p.288), GT-NS20 (p.286), GT-NR20 (p.286)
N20AA27	Ferrous alloy	6.5	4.5	145	GT-N20 (p.288), GT-NS20 (p.286), GT-NR20 (p.286)
N20AB360	Ferrous alloy	7	5	185	GT-NS20 (p.286), GT-N20 (p.288), GT-NR20 (p.286)
N20AP	Ferrous alloy	7	5	125	GT-NS20 (p.286), GT-N20 (p.288), GT-NR20 (p.286)
N20PF	Ferrous alloy	7	5	130	GT-N20 (p.288), GT-NR20 (p.286), GT-NS20 (p.286)
N30AA114	Ferrous alloy	10	6.5	385	GT-N30 (p.288), GT-NR30 (p.286), GT-NS30 (p.286)
N30AP	Ferrous alloy	10	6.5	380	GT-N30 (p.288), GT-NR30 (p.286), GT-NS30 (p.286)
N30PF	Ferrous alloy	10	6.5	390	GT-N30 (p.288), GT-NR30 (p.286), GT-NS30 (p.286)
N50AB	HSS steel	15	8	1,100	GT-N50 (p.288), GT-NR50 (p.286)
N50ABH41	HSS steel	18	8	1,000	GT-N50 (p.288), GT-NR50 (p.286)



Dimensions



N3AP | N5AP | N7AP | N7PF | N10AP | N10LAB152 | N10LAP | N10LPF | N12AP | N20AA239 | N20AA27 | N20AB360 | N20AP | N20PF | N30AP | N30PF



N30AA114 | N50AB | N50ABH41

* = width of opening

Item no.	A [mm]	B [mm]	C [°]	D [mm]	E [mm]	L [mm]
N3AP	24	7	15	11.5	4	64
N5AP	24	7	15	11.5	4	64
N7AP	27	9	30	11.5	4	81
N7PF	27	9	40	10.5	4	81
N10AP	27	9	30	11.5	5	91
N10LAB152	61	12	15	35	10	115
N10LAP	35	12	15	16	5	89
N10LPF	35	12	40	13.5	5	89
N12AP	35	12	15	16	5	105
N20AA239	52.3	12	40	27	14	112.3
N20AA27	45	12	23	25	12	105
N20AB360	61	12	15	35	16	121
N20AP	35	12	15	16	11	95
N20PF	35	12	40	13.5	11	95
N30AA114	76.3	17	30	50	20	160.3
N30AP	66	17	15	38	16	150
N30PF	58	17	30	25	15	142
N50AB	90	25	30	33.5	21	210
N50ABH41	119.6	25	30	40	29	239.6