



Adjustable profile connectors 0° to 90°



GR01.062

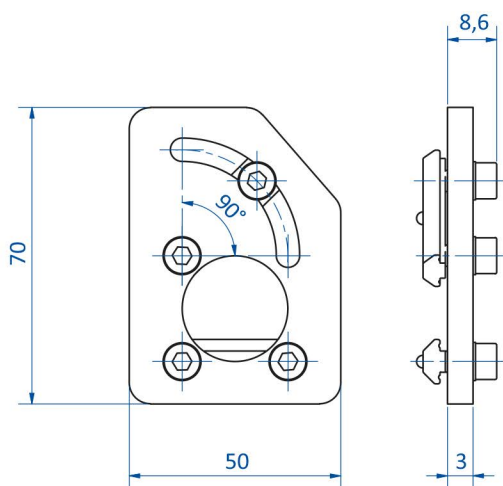
## Product notes

> Joining plates for connection of two profiles with adjustable angle

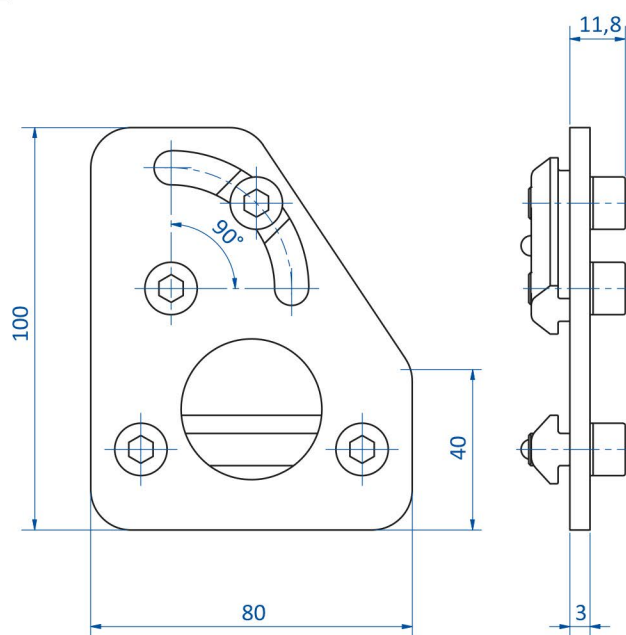
## Technical data

Item no.	Suitable for extrusion system	Width profile 1 [mm]	Width profile 2 [mm]	Material	Weight [g]
GR01.062	SLine, MLine	20 - 25	20 - 25	Aluminum	77
GR-XL01.062	XLine	40	40	Steel	225

## Dimensions



GR01.062



GR-XL01.062