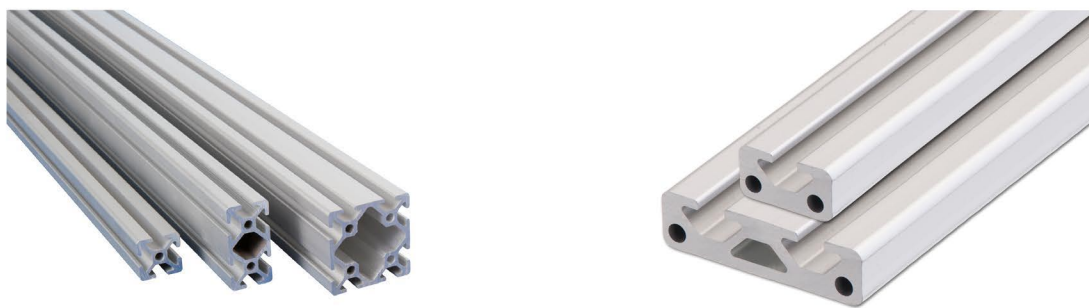




SLine extrusions



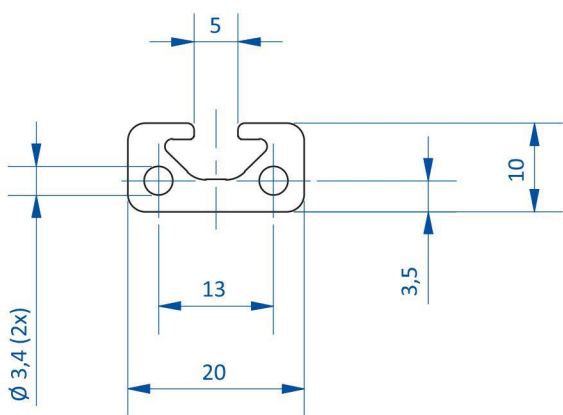
Product notes

- > Lightweight and rigid
- > Material: AlMgSi 0.5 F25
- > Special lengths over 2,000 mm on request

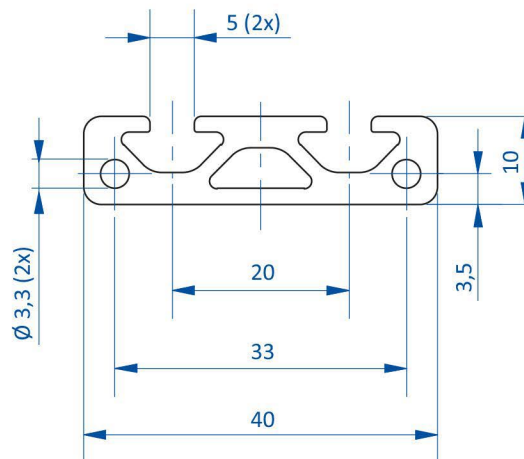
Technical data

Item no.	Length [mm]	Weight [kg/m]	Cross-section area [cm ²]	Second moment of area axial Ix [cm ⁴]	Second moment of area axial Iy [cm ⁴]	Section modulus axial Wx [cm ³]	Section modulus axial Wy [cm ³]	Suitable end caps
GR01.001.2000	1,960	0.35	1.28	0.12	0.53	0.22	0.53	GR01.010
GR01.002.2000	1,960	0.63	2.34	0.24	3.59	0.45	1.8	GR01.011
GR01.003.2000	1,960	0.48	1.8	0.74	0.74	0.74	0.74	GR01.012
GR01.004.2000	1,960	0.87	3.22	1.39	5.16	1.39	2.53	GR01.013
GR01.006.2000	1,960	1.67	6.06	2.68	35.8	2.68	8.95	GR01.015
GR01.007.2000	1,960	1.33	4.94	9.16	9.16	4.53	4.53	GR01.016

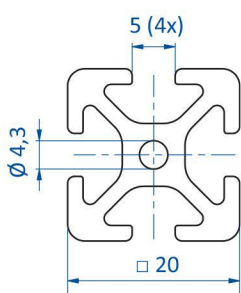
Dimensions



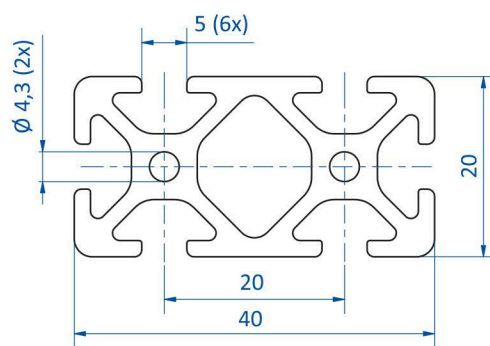
GR01.001.2000



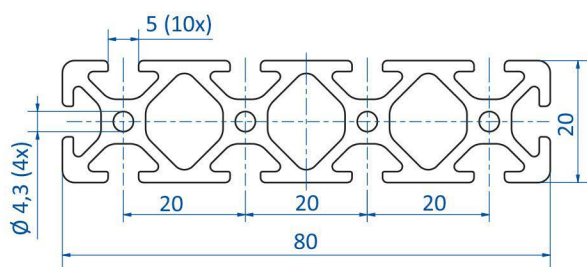
GR01.002.2000



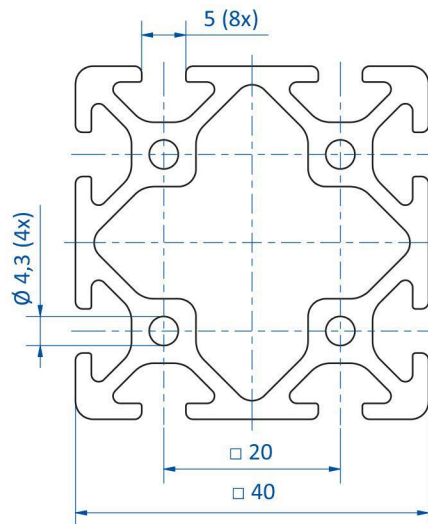
GR01.003.2000



GR01.004.2000



GR01.006.2000



GR01.007.2000